

Bitmaps you can use

The faces of the cubes are created from bitmaps. You can use any BMP or DIP file (though it must be uncompressed, some bitmap handling programs let you save bitmaps in compressed RLE or uncompressed RGB formats - always select RGB.)

Bitmaps can be any number of colours and any size. It doesn't matter how large you make the bitmaps but ideally they should be square. Also there is a slight speed penalty in using larger bitmaps. Pictures which are about 100 to 200 pixels across work best.

Saving bitmaps as 256 colours (8-bit) rather than true colour (24-bit) makes the bitmap file size much smaller and can help the display speed. Using a painting package to convert true colour bitmaps down to 256 colours using an optimised palette gives a quality nearly always as good as true colour. However do not convert to dithered 256 colour bitmaps as these 'sparkle'. It is better to convert down to palette optimised, non-dithered 256 colour bitmaps.

We do not recommend highly detailed bitmaps as such bitmaps tend to 'flicker' or 'sparkle' and distort slightly as they turn. This is not apparent on most bitmaps but may be noticeable if a bitmap contains small detail. A good way of avoiding the 'sparkle' problem is to smooth the bitmap using the smoothing facility in a painting package or CorelXARA.

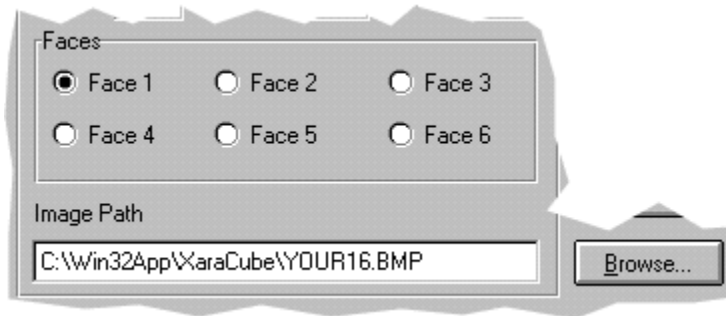
Related Topics

[Defining the faces of the cubes](#)

[Previewing your choices](#)

Changing the pictures on the cubes

The bitmaps used are specified in the Faces section of the dialog box. Face 1 is opposite face 6, 2 opposite 4 and 3 opposite 5. All the pictures supplied with the screensaver were created with [CorelXARA](#). For details of what sort of bitmaps are best, see [Bitmaps you can use](#). Once you have customised the screensaver, you can create a single-file distribution of it so others can install it, see [Redistributing your screensaver](#).



To change a bitmap:

1. Click on the required button (named Face1 to Face6). The Image Path field shows the name of the file being used for that face.
2. To change the bitmap do one of the following :
 - Type a new file name into this field
 - Click the Browse button and then select a filename from the browse window.

Tips

- For best results use square bitmaps which are around 100 to 200 pixels across. For 256 colour pictures this gives file sizes of 10K to around 40K.
- If your images contain very few shades it may be worth converting them to have less colours as the screensaver will be faster. e.g. converting a picture from 256 colours to 16.
- After making changes you can preview the results by clicking on the small animated version of the screensaver in the dialogue box (see [Previewing your choices](#)).
- Note that you may occasionally see a Xara logo replace one side, as a reminder of who developed the program.

Related Topics

[Setting up the picture cubes](#)

Checking the speed of your computer

The XARA screen saver is a graphically intensive program that relies on a combination of processor power and graphics card accelerator functions. As such it is a good test of the overall performance of graphically intensive programs, such as [CorelXARA](#).

Note that you will get different results for different screen depths (number of colours displayed on the screen).

The XARASpeed figure produced from this test can therefore be used to rate the graphics performance of your computer against others.

Click Benchmark to run the speed test and display the result.

Typical Values

486 DX2/66	8-bit (256 colours)	15
Pentium 90	8-bit (256 colours)	45
Pentium 120	8-bit (256 colours)	64



CorelXARA is an advanced graphics program marketed worldwide by Corel Corporation. It has a host of innovative features such as variable transparency, direct-action tools (just drag to create fills and other effects - no need for complex dialog boxes), in-built bitmap tracer and bitmap effects utilities, unique linked colours that let you change all the tints and hues used in a drawing by one simple operation.

CorelXARA comes with 500 fonts in both TrueType & Type 1 formats, over 10,000 pieces of clipart, 250 high quality scanned natural textures and much more..

There's far more to CorelXARA than we can describe here but if you're on the Internet, visit our web site <http://www.xara.com/>

Customising the Xara Screensaver

You can customise the Xara Screensaver using the settings dialogue box. For example, you can put your own bitmaps on the faces of the cubes. (See [Bitmaps you can use](#) for more information on suitable formats.) You can also configure the number of cubes, their speed and distance apart. The screen saver can also display a number of small coloured rectangular boxes that swirl around the screen.

In addition, after you have customised the screensaver with your own pictures you can create a disc with it on (including a setup program) so others can install it.

What do you want to do?

- ▶ [Change the pictures on the cubes](#)
- ▶ [Set up the picture cubes](#) (number, size and speed)
- ▶ [Set up the small boxes](#) (number, size, speed and spacing)
- ▶ [Preview your choices](#)
- [Turn on transparency](#)
- [Redistributing your screensaver](#)

Related Topics

[Restoring the default settings](#)

[Checking the speed of your computer](#)



This screen saver demonstrates some of the Xara graphics technology used in products such as [CorelXARA](#). When you first load the screen saver, it automatically detects the speed and performance of your computer and displays a suitable number of picture cubes and small boxes. You can then use the Settings dialog box to change these settings - including placing your own pictures on the faces of the cubes.

- [Customising the screen saver](#)
- [More about the screen saver](#)
- [Xara Ltd.](#)

You may copy and distribute this screen saver to third parties without restriction if you include this Help file and the ReadMe file with each copy distributed.

You can reconfigure the screen saver using the options provided by the Settings dialog box. (For example, to include your own logos on the faces of the cubes.) You are not permitted to modify the software in any other way. Nor are you permitted to alter this help file or the readme file in any way.

Corel & CorelXARA are trademarks of Corel Corporation
XARA is a trademark of Xara Ltd.

TrueType is a registered trademark of Apple Computers Inc.

All other products and company names are trademarks or registered trademarks of their respective companies. For more information on CorelXARA, see the Xara WWW site at <http://www.xara.com/> . For information on Corel products, see <http://www.corel.com/>

This help file and the software are (c)1996 Xara Ltd, are not public domain and may not be used by any third party programs or reverse engineered.

Your use of this software constitutes agreements with these conditions.

More about the screen saver

This screen saver uses some of the technology used in [CorelXARA](#), the graphics package written by [Xara Ltd.](#) In particular, it shows off the ultra-fast graphics rendering engine that's the secret of CorelXARA's excellent screen redraws. Also, for screen modes above 256 colours, you can see CorelXARA's [variable transparency](#) in action.

The screensaver uses anti-aliasing to make the sides of the cube very smooth so the typically computer jagged edges are removed. This is particularly noticeable when the cubes are rotating very slowly. This technique is used in CorelXARA to significantly increase the quality of the screen display.

The cubes follow a wavy ellipse which is slowly revolving. The small boxes follow a three dimensional rotating and distorting loop.

All the pictures supplied with the screensaver were created with CorelXARA.

For those who want to know technical details, the screen saver is a 32-bit program. Both Windows NT and Windows 95 are 32-bit operating systems and the screen saver runs native under these operating systems. Windows 3.1 is a 16-bit operating system and requires an extra bit of software called Win32s to run 32-bit applications.

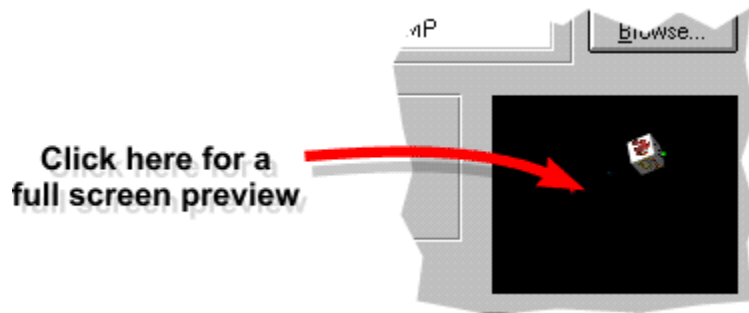
If you get the error message "Win32s not found", run the Viewer Setup program. This automatically installs Win32s.

Note that the screensaver Settings dialogue box does not appear in the Windows 95 Task List, so it may be possible to "Lose" it behind other windows.

Because of problems with some Windows 3.1 video drivers, the screensaver defaults to 256 colours in Windows 3.1 modes with thousands or millions of colours. If you would like to try the screensaver in more than 256 colours, in the xaracube.ini file, change the line reading "Win31UseDeep=0" to "Win31UseDeep=1". If problems occur you will see a black screen and will need to revert the setting.

Previewing your choices

The Settings dialogue displays a small version of screen saver so you can see how it looks. If you want to see how the screen saver looks full size, click on the small animated version.



Tip

- Move the mouse or press a key to return to the Settings dialogue box.

Redistributing your screensaver

You can redistribute the screensaver with your own set of bitmaps so others can install it.

To create your own distribution

1. Create a new, empty directory (say XaraCube).
2. Copy all the Xara screensaver files into the directory (see notes).
3. Change the **bitmaps.txt** file (see later) so it lists the names of the bitmaps you want to use.
4. Create a directory inside the XaraCube directory called **Bitmaps**.
5. Place the bitmaps in the Bitmaps directory.

If you now run setup.exe, the screensaver will be installed with your bitmaps.

Once the screensaver setup program works correctly, the files can be compressed with PKZIP (this is a utility for creating a single, compressed file from a set of files). This means you can distribute the whole screensaver in one file. Note that we do not supply PKZIP.

To create a single file distribution

1. Move to the XaraCube directory.
2. Run the command **pkzip -rp xaracube.zip *.*** to create an archive of the files and bitmaps.
3. Run the command **zip2exe xaracube** to turn the archive into an exe file.

To install your screensaver

1. Place xaracube.exe into a temporary directory.
2. Run it
3. Run the setup.exe file.

Notes

- All the files from the Xara Screensaver must be included or the screensaver will not work. This means setupres.dll, setreg.exe, setupres.bmp, bitmaps.txt, readme.txt, setup.exe, setup.ins, setup.pkg and xaracube.z
- The above has been tested with PKZIP 2.04g. For details of this product, see <http://www.pkware.com/>.
- If the screensaver cannot find one or more of the bitmaps, it will warn you when you open the Settings dialogue box.

Bitmaps.txt
picture1.bmp
picture2.bmp
picture3.bmp
picture4.bmp
picture5.bmp
picture6.bmp

Restoring the default settings

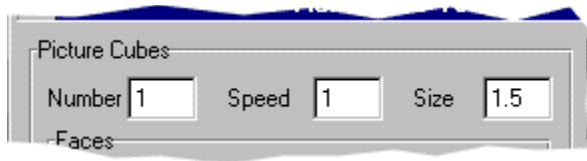
When you first load the screen saver, it intelligently selects values based on the specification of your machine to give a flowing, smooth animation.

Clicking the Reset button in the Settings dialogue box reruns this test to reselect the original values. Clicking the OK button will then use these settings.

Tip

- Remember that clicking the Reset button won't change the bitmaps which is useful if you've customised the cubes with your own bitmaps.

Setting up the picture cubes



Number

This sets the number of cubes displayed.

Speed

This sets the speed the cubes move at. Set it to the same value as Small boxes if you want the cubes to move at the same speed as the boxes.

Size

This sets the size of the picture cubes. On a 15" monitor, a size of 1 is approximately 1".

Tips

- After making changes you can preview the results by clicking on the small animated version of the screensaver in the dialogue box (see [Previewing your choices](#)).
- Remember that if you have more than a couple of large cubes the display may not be as smooth.

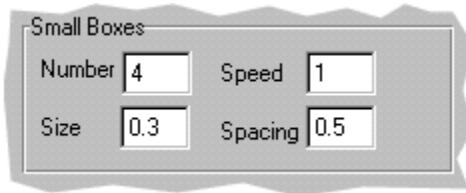
Related Topics

[Defining the faces of the cubes](#)

[Setting up the small boxes](#)

Setting up the small boxes

As well as the picture cubes you can also display one or more rectangular boxes. The colours on the faces are fixed.



Number

This sets the number of small boxes displayed.

Speed

This sets the speed of the small boxes. Set it to the same value as that in the Picture cubes section if you want the boxes to move at the same speed as the picture cubes.

Size

This sets the size of the small boxes. On a 15" monitor, a size of 1 is approximately 1". We recommend making the small boxes smaller than the picture cubes.

Spacing

This controls the distance between the boxes. A small spacing (0.01) gives you a flowing line of boxes. Large spacings (above 15) make the boxes appear to follow a random path.

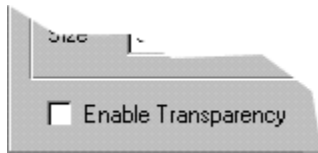
Tip

- After making changes you can preview the results by clicking on the small animated version of the screensaver in the dialogue box (see [Previewing your choices](#)).

Related Topics

[Setting up the picture cubes](#)

Turning on Transparency



With transparency on, the cubes and boxes appear semi-transparent and you can see objects behind them. This feature shows [CorelXARA's](#) unique graduated transparency capability.

Note

- The Transparency is only really visible when the cubes cross each other.
- After making changes you can preview the results by clicking on the small animated version of the screensaver in the dialogue box (see [Previewing your choices](#)).
- You can only select the transparency option if your screen has 16-bit (thousands of colours) or 24-bit (millions of colours). Windows 3.1 users see note below.
- Because of problems with some Windows 3.1 video drivers, the screensaver defaults to 256 colours in Windows 3.1 modes with thousands or millions of colours. If you would like to try the screensaver in more than 256 colours, in the xaracube.ini file, change the line reading "Win31UseDeep=0" to "Win31UseDeep=1". If problems occur you will see a black screen and will need to revert the setting.

Xara Ltd



Xara was started in 1993 to develop innovative software products for the PC market. Its first product, Xara Studio, was launched in 1995 to excellent magazine reviews and enthusiastic user response. It wasn't just magazines and customers who were impressed either because a few months after the launch of Studio, Corel Corporation (the developers of CorelDRAW) took it on as one of their own products.

Corel renamed it CorelXARA and are now marketing it worldwide.

Although Xara Ltd. is a relatively young company, it has its roots in another software company, Computer Concepts Ltd. which was founded way back in 1981. It has over six years experience developing 32-bit windowing based applications for RISC based computers. This has given us an unrivalled experience of developing microcomputer application software. This experience predates the arrival of 32-bit Windows based environments by many years.

The arrival of 32-bit Windows programming environments (Windows 95, Windows NT and Windows 3.1 with Win32s) has meant we can now exploit that experience in the wider PC and Windows market, rather than the more niche markets we occupied before.

**Xara Ltd
Gaddesden Place
Hemel Hempstead
Hertfordshire HP2 6EX
United Kingdom**

Tel: **01442 350000**
outside UK +44 **1442 350000**
Fax: **01442 350010**
outside UK +44 **1442 350010**
WWW **<http://www.xara.com/>**
<http://www.corel.com/>
Email **info@xara.com**

